

**From:** Bowman, Randal  
**To:** [Downey Magallanes](#)  
**Subject:** Fwd: Question on Utah Park System units  
**Date:** Thursday, June 08, 2017 4:33:52 PM  
**Attachments:** [Map-GlenCanyonNRA.pdf](#)

---

Here is Park Service confirmation on Utah parks. They changed the wording somewhat on the sentence covering adjacent Federal areas, but no substantive changes, and included a map.,

----- Forwarded message -----

**From:** **Boone, Whitney** <[whitney\\_boone@nps.gov](mailto:whitney_boone@nps.gov)>  
**Date:** Thu, Jun 8, 2017 at 5:02 PM  
**Subject:** Re: Question on Utah Park System units  
**To:** "Bowman, Randal" <[randal\\_bowman@ios.doi.gov](mailto:randal_bowman@ios.doi.gov)>

1. This statement is correct. If you want a more exact figure, Glen Canyon NRA is approximately 1,254,306 acres

2. Revised statements:

Glen Canyon NRA's southern boundary runs contiguous to lands of the Navajo Nation. Glen Canyon NRA shares boundaries with other national park system units, including Grand Canyon National Park, Capitol Reef National Park, Canyonlands National Park, and Rainbow Bridge National Monument. Glen Canyon National Recreation Area adjoins approximately 9.3 million acres of other federal lands administered by the Bureau of Land Management (BLM), including the Grand Staircase-Escalante National Monument, Vermilion Cliffs National Monument, and the Paria Canyon-Vermilion Cliffs Wilderness. (See attached map of the area, which shows detail on boundaries).

Glen Canyon National Recreation Area was established in 1972 (Public Law 92-593) "to provide for public outdoor recreation use and enjoyment of Lake Powell and lands adjacent thereto in the States of Arizona and Utah and to preserve scenic, scientific, and historic features contributing to public enjoyment of the area..."

(b) (5) DPP



3. Approximately 46,943 acres in AZ and 1,207,363 acres in UT

Let me know if you need anything else!

Whitney

On Thu, Jun 8, 2017 at 12:38 PM, Bowman, Randal <[randal\\_bowman@ios.doi.gov](mailto:randal_bowman@ios.doi.gov)> wrote:

1) I found this from Park web sites, could you have someone confirm or revise today -

Largest park system unit in Utah is the Glen Canyon National Recreation area, 1.25 million acres mostly in Utah, small portion in AZ. Largest actual National Park in Utah is Canyonlands, 337,598 acres.

2) I also found this Information on Glen Canyon, from Wikipedia, which was a more concise set of information than I saw on any NPS site, could someone confirm or revise this also:

"The recreation area borders [Capitol Reef National Park](#) and [Canyonlands National Park](#) on the north, [Grand Staircase-Escalante National Monument](#) on the west, [Vermilion Cliffs National Monument](#) and the northeasternmost reaches of [Grand Canyon National Park](#) on the southwest, and the [Navajo Indian Reservation](#) on the southeast.

The Glen Canyon NRA was established in 1972 "to provide for public use and enjoyment and to preserve the area's scientific, historic, and scenic features."

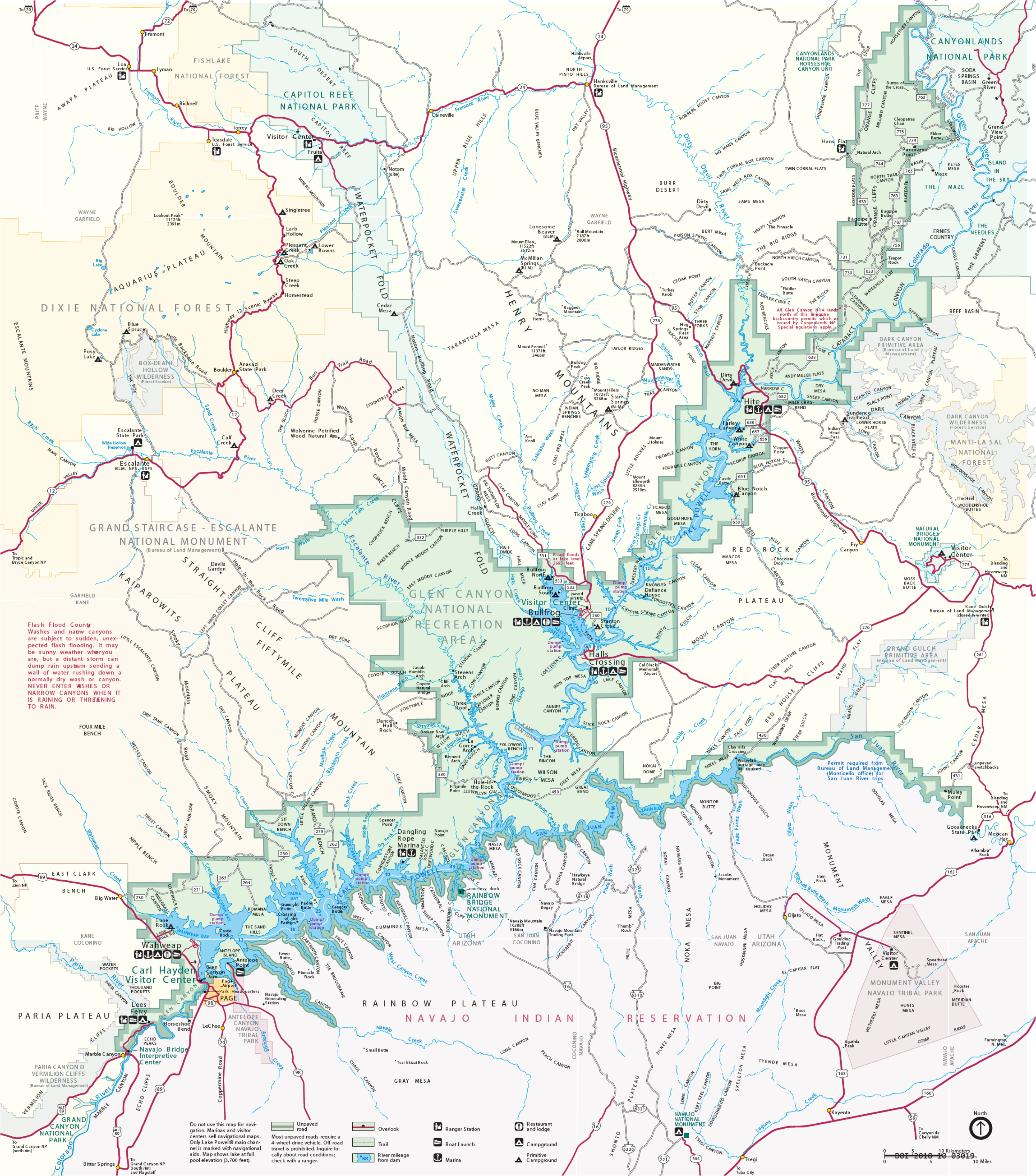
The stated purpose of Glen Canyon NRA is for recreation as well as preservation. As such, the area has been developed for access to Lake Powell via 5 marinas, 4 camping grounds, two small airports, and [houseboat](#) rental concessions."

3) Lastly, I could not find anywhere how much of Glen Canyon is in Utah and how much in AZ; maps seem to show most of it in Utah, but there were no acreage figures for how much is in each State that I could find.

--

Whitney Boone  
Park Planning and Special Studies  
National Park Service  
202-354-6970





**Flash Flood County**  
Washes and narrow canyons are subject to sudden, unexpected flash flooding. It may be sunny weather where you are, but a distant storm can dump rain upstream sending a wall of water rushing down a normally dry wash or canyon. NEVER ENTER WASHES OR NARROW CANYONS WHEN IT IS RAINING OR THREATENING TO RAIN.

Do not use this map for navigation. Marinas and visitor centers sell navigational maps. Only Lake Powell's main channel is marked with navigational aids. Map shows lake at full pool elevation (3,700 feet).

Unpaved road  
Most unpaved roads require a 4-wheel-drive vehicle. Off-road travel is prohibited. Inquire locally about road conditions; check with a ranger.

Overlook  
Trail  
River mileage from dam

Ranger Station  
Boat Launch  
Marina

Restaurant and lodge  
Campground  
Primitive Campground

0 5 10 Kilometers  
0 5 10 Miles

